

Verifica B pagina 1

E₁

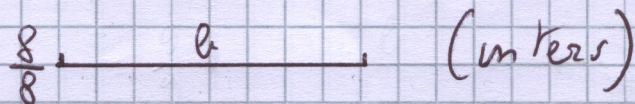
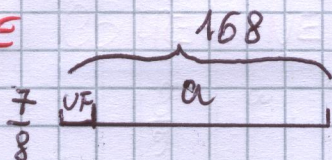
CORREZIONE

DATI

$$a = \frac{7}{8} b$$

$$a = 168 \text{ dm}$$

$$b = ?$$



SVOLGIMENTO

$$VF\left(\frac{1}{8}\right) = \frac{168}{28} = 7 = 24 \text{ dm}$$

$$b\left(\frac{8}{8}\right) = 24 \times 8 = 192 \text{ dm}$$

E₂

DATI

$$a = \frac{8}{5} b$$

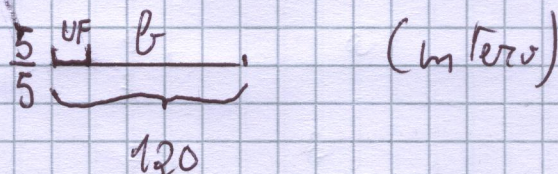
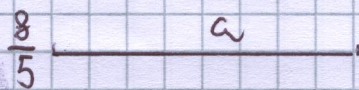
$$b = 120 \text{ cm}$$

$$a = ?$$

SVOLGIMENTO

$$VF\left(\frac{1}{5}\right) = \frac{120}{20} = 5 = 24 \text{ cm}$$

$$a\left(\frac{8}{5}\right) = 24 \times 8 = 192 \text{ cm}$$



Verifica B pagina 2

Es 3

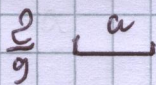
COMPRESSIONE

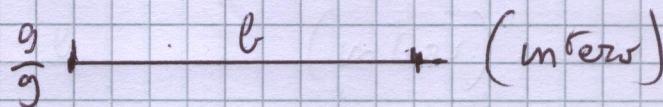
DATI

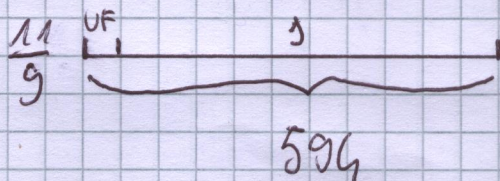
$$a = \frac{2}{9} b$$

$$s = a + b = 594 \text{ dm}$$

$$a = ?$$







SVOLGIMENTO

$$s = a + b = \frac{2}{9} + \frac{9}{9} = \frac{11}{9}$$

$$UF\left(\frac{1}{9}\right) = \frac{594}{\frac{11}{9}} = 11 = 54 \text{ dm}$$

$$a\left(\frac{2}{9}\right) = 54 \times 2 = 108 \text{ dm}$$

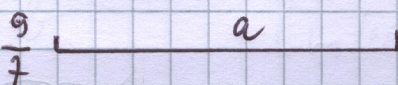
Es 4

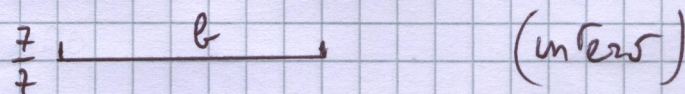
DATI

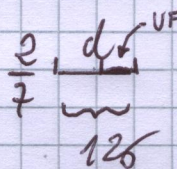
$$a = \frac{9}{7} b$$

$$d = a - b = 126 \text{ dm}$$

$$b = ?$$







SVOLGIMENTO

$$d = a - b = \frac{9}{7} - \frac{7}{7} = \frac{2}{7}$$

$$UF\left(\frac{1}{7}\right) = 126 : 2 = 63 \text{ dm}$$

$$b\left(\frac{7}{7}\right) = 63 \times 7 = 441 \text{ dm}$$